

# Precision Sails **Measurement Form**

## In-Mast Furling Mainsail



9724 Fourth St Suite 101 – Sidney, BC  
1-888-958-5638  
www.precision sailloft.com

In order to provide you with a sail that not only looks great but also performs exceptionally well, please fill out all the relevant sections to the best of your ability, and we will guarantee your sail is a perfect fit for your boat.

### ■ **Before You Start**

Before heading to your boat and measuring make sure you have the following:

- Reeled Tape Measure (**Do Not Use Rope**)
- Measurement Form
- Camera or Phone

#### Resources



Video  
Tutorial



Online  
Form



Form  
Submit



### ■ **1. Sailor Information**

Order Number :  Boat Year and Make :

Name on Order :  Phone Number :

### ■ **2. Photos**



#### Boat Photos (*Required*)

*Photos of your boat help us to design the best Mainsail possible. Sending the required photos with this form will allow us to understand your rig better.*

**Check off photos as you take them and include them in your submission.**

☐ Boom Position Photo Taken

☐ Clew System Photo Taken

☐ Canvas Photo Taken

☐ Measurements A, B, C, D Photos Taken

#### Side Profile Photo Notes

Side profile of the boat with mast.

- Your boom must be in the normal sailing position.
- Anything that changes your boom tack angle from 90°.
- Tack and Clew must be visible.
- The top of the boom must be visible and uncovered.

☐ Side Profile Photo Taken

## 3. Furling System

These measurements cannot be taken with rope

Mainsail Max  
Hoist (A)

- Attach the measuring tape to the swivel, where the head of the sail attaches, and hoist it until it stops. Measure down to the tack attachment inside the mast.

:

Maximum Leech  
Length (B)

- With the measuring tape still hoisted, walk the measuring tape to the outhaul car in its furthest position, at the end of the boom.

:

Maximum Foot  
Length (C)

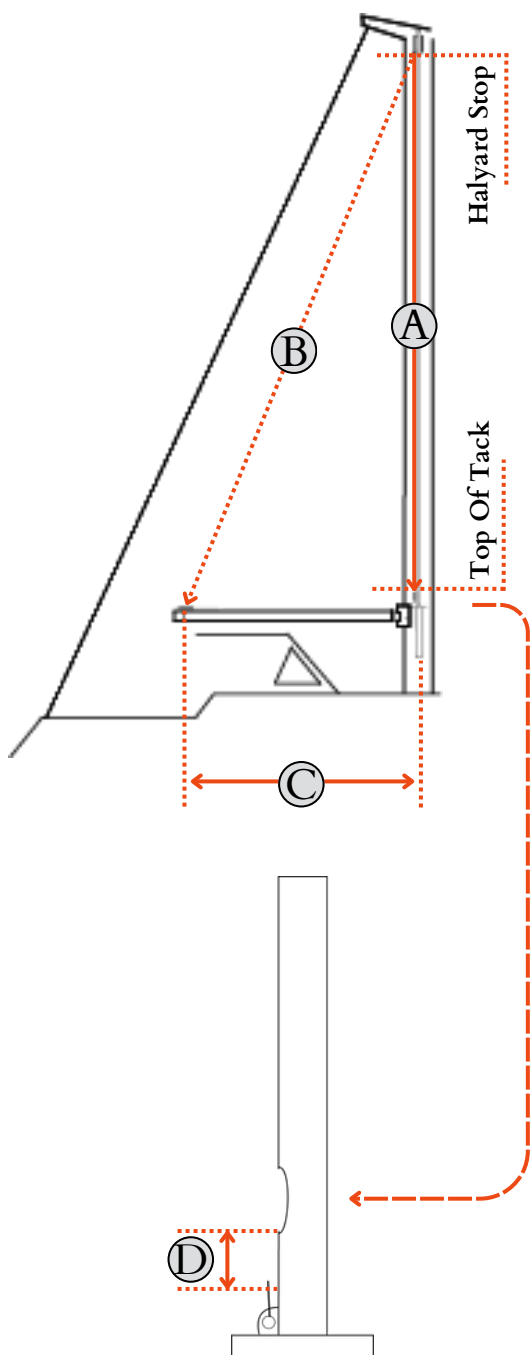
- Attach the measuring tape to the outhaul car, pull the car to its max-position at the end of the boom. Measure to the tack attachment inside the mast.

:

Luff Groove  
Entrance Height (D)

- Measure from the tack attachment to the bottom of the luff groove entrance.

:



## 4. Luff Specifications

Furler Manufacturer

Furler Model

:

:

Luff tape suggested in manual

:

OR

Existing luff tape measured from sail

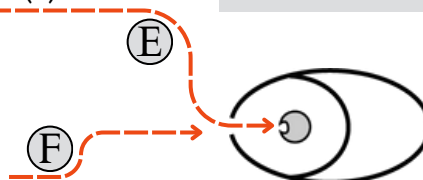
:

OR

Internal Groove Diameter (E)

:

Opening Width of Mast



Foil diameter: 4.40/22 inches

### Selden Masts:

Selden Furling systems have VERY specific Luff Diameter requirements. If you know your furling unit is an RA / RB / RC model, please let us know. Alternatively, you can measure the inside of the foil diameter with a pair of calipers.

## 5. Battens *(Only Fill If You Are Getting Battens)*

Mast Opening  
Slit Width (F)

- Measure the opening width of the Mast Slot.

:

Furling Rotation Direction

☐ CLOCKWISE

☐ COUNTER CW

## 6. Customization Options

### SAIL DISTINCTIONS

#### SAIL NUMBERS

#### UV COLORS

- Please select a color option

### DRAFT STRIPE COLOR

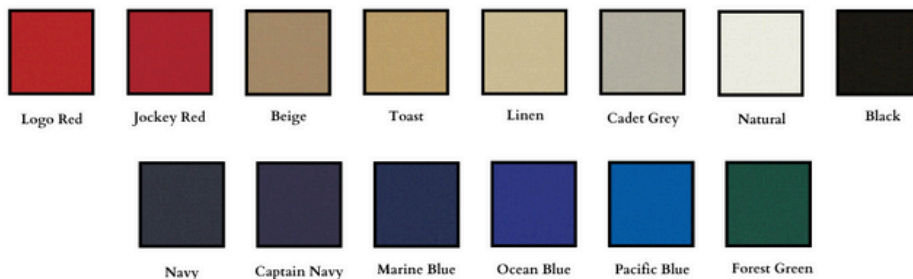
☐ Black ☐ Red ☐ Blue ☐ Green ☐ Grey ☐ White

### SAIL NUMBER COLOR

☐ Black ☐ Red ☐ Blue ☐ Green ☐ Grey ☐ White

☐ DACRON UV  
• Only in white

☐ ACRYLIC UV  
• Select ONE color option below



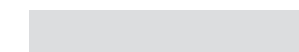
## 7. Measure Your Existing Mainsail

- Lay the sail out on a flat surface.
- Do not try to measure any curves in the sail, measure in a straight line from corner to corner.
- Sails stretch overtime, make sure to pull the sail taught before measuring. Our designers will make the correct adjustments when we build your sail.

#### Mainsail Measurements

- Measure the forward leading edge.
- Measure from the Head to the Clew in a straight line.
- Measure the bottom edge.

#### Existing Sail UV Color



:  LUFF  
:  LEECH  
:  FOOT

#### ADDITIONAL NOTES -

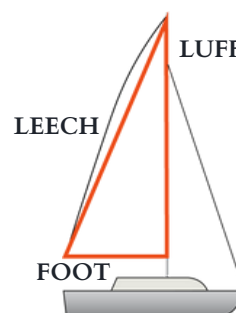
---

---

---

---

---



## Form Submission

Phone and Fax: 1-888-958-5638 • [www.precisionsailloft.com](http://www.precisionsailloft.com) • [measurements@precisionsailloft.com](mailto:measurements@precisionsailloft.com)